



ANNA

**EUROPEAN
WARRANTY**

MATERIAL:

- Vertical collectors in painted mild steel semi oval 30x40 mm.
- Horizontal heating elements in painted mild steel \varnothing 25 mm.

FIXING KIT:

Brackets, airvent, hexagonal tool, plugs and screws for mounting suitable for use on compact or hollow brick, user notice.

The kit is certified from TÜV in compliance with VDI 6036 - class 4.

PACKAGING:

Carton angular and profiles protected by a recyclable film in polyethylene. User notice included.

PAINTING PROCESS:

Painted with ecological epoxy powders (Certificate DIN 55900-1,-2).

COLOURS:

See colour chart.

ACCESSORIES:

For the complete list, please refer to the accessories chapter.

AVAILABLE FUNCTIONS:

- Hot water
- Dual energy

P. max: 8 bar

Functioning: hot water

T. max: 110° C

Connections: n° 2 x 1/2" G - 1 x 1/2" G

CERTIFICATES



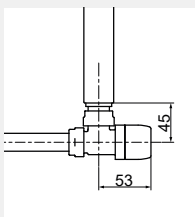
ACCESSORIES

Kristal valve square with thermostatic option white R01



Copper conn. \varnothing 12/14/15
Art. nr. 5991990311161

Multilayer conn. \varnothing 16
Art. nr. 5991990311160



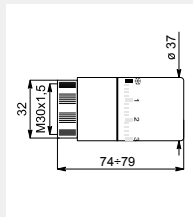
Quotes for square Kristal valves with thermostatic option



Thermostatic head chromed

(Kit 2 pieces)

Art. nr. 5035270710015



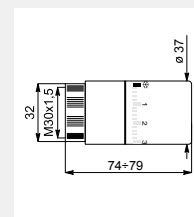
Thermostatic head quotes



Thermostatic head white

(Kit 2 pieces)

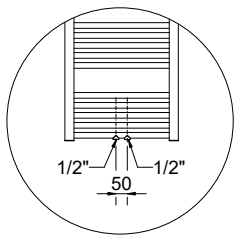
Art. nr. 5035270710016



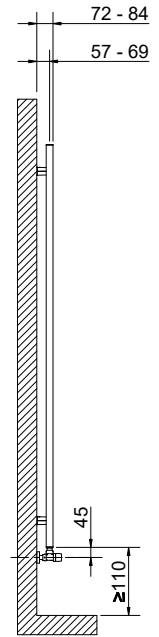
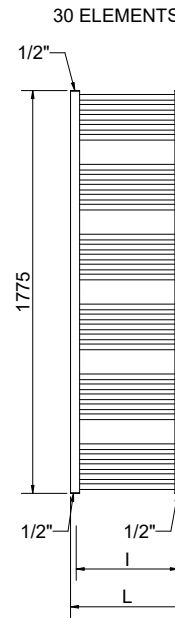
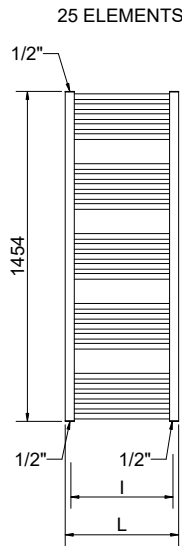
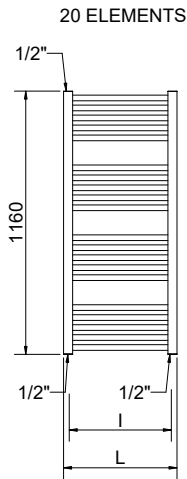
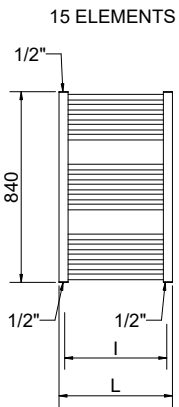
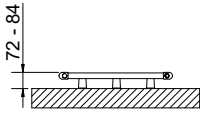
Thermostatic head quotes

If ordered separately from the radiator, the accessories are available in standard white only

Art. nr. are referred to colour WHITE R01



Detail of the pipe centres 50 mm version



Quotes for Kristal valves

ANNA

Height [mm]	Width L [mm]	Pipe centres l [mm]	Art. nr.	Pipe centres 50 mm		Thermal output [Watt]					Dual energy kit [Watt]
				Art. nr.	Dry Weight [Kg]	Surface [m ²]	Water content [lt]	Δt=50°C	Δt=30°C	Exp. n	
840	400	350	3551686100001	3551686100017	4,7	0,588	3,6	325	175	1,2074	300
	450	400	3551686100005	3551686100021	5,1	0,647	3,9	358	193	1,2050	300
	500	450	3551686100009	3551686100025	5,4	0,706	4,2	392	212	1,2027	400
	550	500	3551686100041	3551686100033	5,8	0,740	4,6	426	231	1,2003	400
	600	550	3551686100013	3551686100029	6,1	0,823	4,9	458	248	1,1979	400
1160	750	700	3551686100045	3551686100037	7,2	0,940	5,9	573	312	1,1908	600
	400	350	3551686100002	3551686100018	6,4	0,797	4,9	429	230	1,2169	400
	450	400	3551686100006	3551686100022	6,9	0,876	5,3	472	254	1,2155	500
	500	450	3551686100010	3551686100026	7,3	0,954	5,7	515	277	1,2142	500
	550	500	3551686100042	3551686100034	7,8	1,000	6,2	557	300	1,2128	500
1454	600	550	3551686100014	3551686100030	8,3	1,111	6,6	600	323	1,2115	600
	750	700	3551686100046	3551686100038	9,7	1,300	7,9	728	393	1,2074	700
	400	350	3551686100003	3551686100019	8,0	0,998	6,1	534	287	1,2170	500
	450	400	3551686100007	3551686100023	8,6	1,096	6,7	586	315	1,2151	600
	500	450	3551686100011	3551686100027	9,2	1,194	7,2	639	344	1,2133	600
1775	550	500	3551686100043	3551686100035	9,7	1,250	7,7	692	373	1,2115	700
	600	550	3551686100015	3551686100031	10,4	1,390	8,3	744	401	1,2097	700
	750	700	3551686100047	3551686100039	12,1	1,630	9,9	902	488	1,2043	900
	400	350	3551686100004	3551686100020	9,7	1,205	7,4	660	354	1,2170	600
	450	400	3551686100008	3551686100024	10,4	1,323	8,1	725	390	1,2147	700
1775	500	450	3551686100012	3551686100028	11,1	1,440	8,7	789	425	1,2124	700
	550	500	3551686100044	3551686100036	11,7	1,500	9,3	855	461	1,2101	900
	600	550	3551686100016	3551686100032	12,4	1,620	10,0	919	496	1,2078	900
	750	700	3551686100048	3551686100040	14,5	1,960	11,9	1114	603	1,2009	1000

Art. nr. are referred to colour WHITE R01

For output at different ΔT, please refer to the following formula: desired output = output at ΔT 50 x (desired Δt/50)ⁿ